



**Sir Harry Smith**  
**COMMUNITY COLLEGE**  
ASPIRATION & ACHIEVEMENT FOR ALL

**SIR HARRY SMITH COMMUNITY COLLEGE**  
**TRANSITION 2026**  
**WELCOME PACK**



## Principal's Welcome

As Principal at Sir Harry Smith Community College, I am proud to lead a truly inclusive comprehensive College, committed to providing an ambitious programme of learning to the students in our community. We strive to get the very best out of our students, supported by our core values of aspiration, courage, resilience and kindness.

To support your child on their academic journey, we are constantly evaluating our curriculum to ensure we provide them with the skills and knowledge they will need to ensure their future success. In turn, we encourage our parents and carers to be fully engaged in college life, supporting our college values and ensuring our success.

We offer an extremely diverse programme of extra-curricular activities, which enhances and works alongside your child's academic development. Your child could become part of a sports team, could learn to play a musical instrument or take part in one of our annual college productions. There are also activities based on literature, creative writing, arts and STEM, all of which contribute to making our students well-rounded, accomplished individuals.

As a college, we recognise that some students will require additional support. As such we have implemented a strong leadership team under our new House System, providing guidance and motivation, as well as pastoral support. We have a well-established careers and post-16 advice programme, with a growing 6<sup>th</sup> Form. We are extremely proud of the further education support offered by our SEND team, across all school years.

Sir Harry Smith Community College is proud to serve its local community, and we recognise the important role that education plays. We are committed to promoting our new college ethos, providing an environment in which our students are:

- Prepared to learn
- Respectful to staff and peers
- Safe; providing an environment in which our students feel safe and supported

When choosing a secondary school for your child, you are preparing their path for an exciting future. Sir Harry Smith Community College is committed to providing the best foundation for your child's journey, helping them achieve their full potential.

### Key Staff

**Ms White | Principal**



**Mr Crane | Transition Lead**



**Mrs Light-Rudland |  
SENDCo**



## Timeline of Events

21st May

- Transition Information Packs Distributed

5th June

- Transition Information Packs **Returned to Sir Harry Smith Community College**

6th July

- Induction Day 1

6th July

- Parents' Information Evening

7th July

- Induction Day 2

2nd September

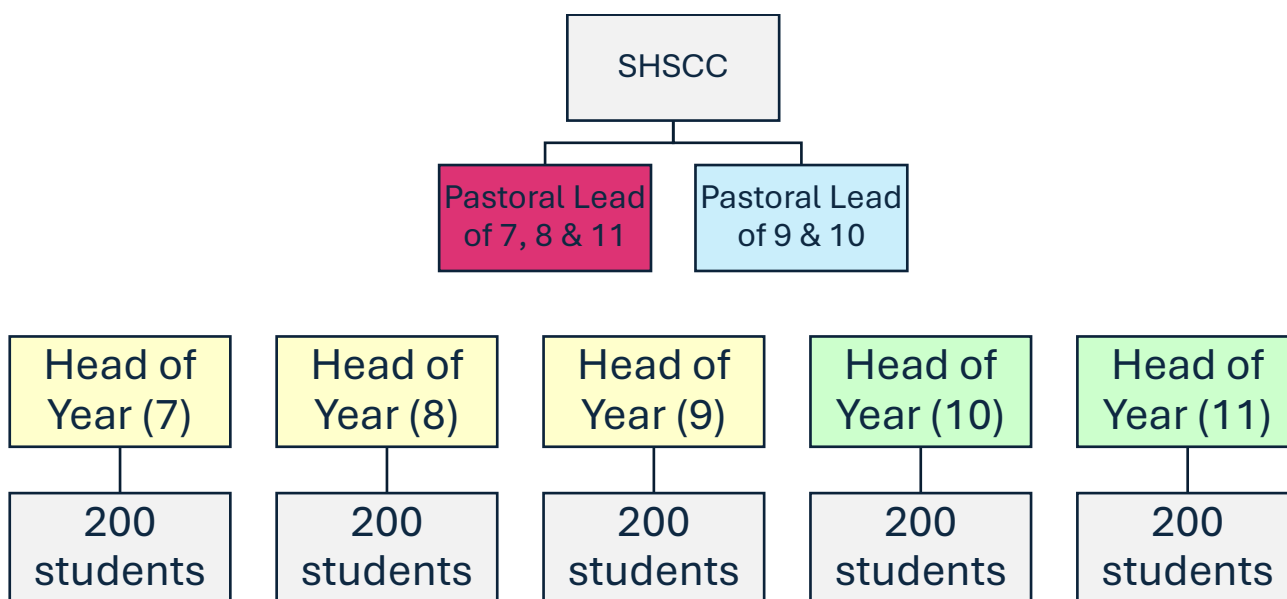
- Locker Rental Key Collection

3rd September

- Term Starts for Year 7 and 12 students only

## Our Pastoral Structure

At Sir Harry Smith Community College, every student is supported through a strong traditional (horizontal) pastoral structure, organised by year group.



Each year group is led by a dedicated Head of Year, who oversees the wellbeing, behaviour, and progress of all students in that year. They are available throughout the school day to respond to concerns, work with families, and provide consistent support. Students also belong to one of eight tutor groups, each led by a committed Form Tutor who sees them daily, builds relationships, and helps them settle into school life. This structure ensures that every student is known, supported, and guided throughout their journey at SHSCC.

## Our House System

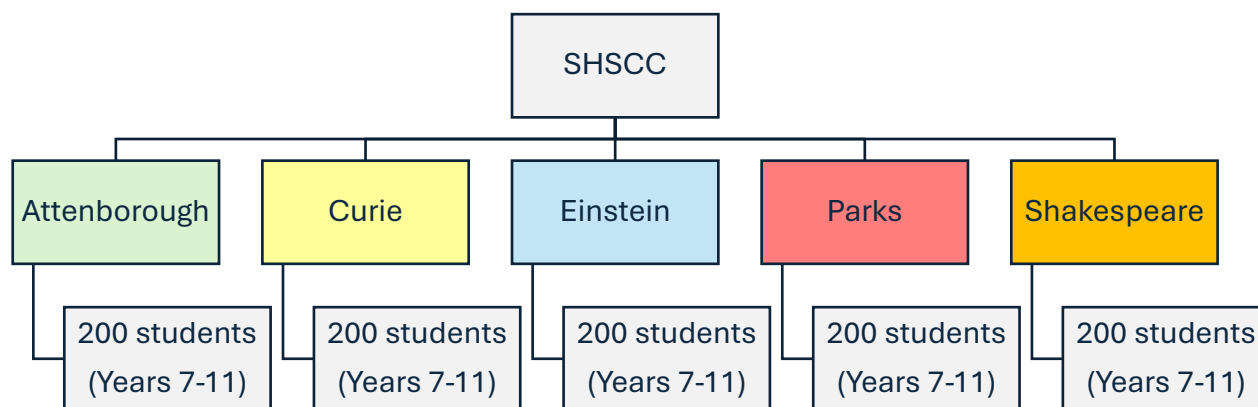
Alongside the year-group pastoral structure, every student joins one of our five Houses — **Attenborough**, **Curie**, **Einstein**, **Parks**, and **Shakespeare**. The House system builds community across year groups, giving students opportunities to collaborate, compete, and celebrate success beyond their tutor group and year team.

Each House is named after an inspirational figure whose life and work reflect the values we promote at the College:

- **Attenborough** — inspired by Sir David Attenborough's commitment to the natural world, this House champions curiosity, stewardship, and respect for our environment.
- **Curie** — named after Marie Curie, representing resilience, scientific discovery, and the courage to push boundaries.
- **Einstein** — reflecting Albert Einstein's creativity and problem-solving, this House encourages students to think deeply, question boldly, and embrace challenge.
- **Parks** — inspired by Rosa Parks, symbolising equality, integrity, and standing up for what is right.
- **Shakespeare** — celebrating William Shakespeare's imagination and expression, this House promotes communication, creativity, and cultural understanding.

Together, these Houses help shape a school culture built on **respect, ambition, resilience, and community**. Students earn House points, take part in competitions, and work together across year groups — building friendships and confidence as they settle into secondary school life.

## Typical House Structure



As part of Year 7 Transition, your child will be enrolled into one of the 8 Tutor Groups, and one of the 5 Houses.

### Registration

Registration takes place each morning from 08:30am to 09:00am. One morning each week, this session is replaced by a Year Group Assembly held in the main hall. On all other days, students attend Registration with their Form Tutor.

Across the week, Registration follows a structured programme designed to support students' personal development and readiness for learning. Sessions include a balance of literacy and numeracy activities, PSHE themes, careers education, a weekly quiz to promote general knowledge and teamwork, and dedicated time focused on mental health and wellbeing. This structured approach ensures students begin each day with purpose, consistency, and support.

The Form Tutor plays a central role in this process, supporting each student's personal development, academic progress, and wider achievements. They provide daily guidance, help students establish positive routines, and monitor wellbeing throughout the year. The Form Tutor is also the first point of contact for parents and carers, acting as the primary link between home and school. As students move through the College, the Form Tutor contributes to the ongoing monitoring of learning, supports target-setting, and helps prepare students for future education, training, and careers.

### Rent a Locker

Your child will have the option to rent a locker for the 5 years that they will be a student at the College. The cost for this hire is £30.00, which is non-refundable. Children in receipt of Free School Meals do not have to pay, however, evidence will need to be provided on receipt of the key. Payment for locker rental can be made via ParentPay during the six weeks summer holiday. The locker key can be collected from 08:00am – 2:00pm on 2<sup>nd</sup> Sep at the College.

### ASPIRE Awards Programme

The ASPIRE Awards Programme aims to provide students with a wide range of character-building opportunities, to enhance their learning and development beyond the classroom. Opportunities include student leadership, citizenship, moral purpose, sense of community and collective responsibility. Our ASPIRE Awards Programme have the British Values of Democracy, Rule of Law, Individual Liberty, Mutual Respect, and Tolerance at their core.

The Programme is comprised of 6 strands, each affording opportunity to develop a different skills-set. These are Achievement, Service, Participation, Inclusive, Responsibility and Environment. There are three levels of

difficulty, Bronze, Silver and Gold. Independence and leadership skills must be demonstrated to progress across the different levels of difficulty.

## Extract of ASPIRE Awards Activities Grid

ASPIRE AWARDS							
School values		Pursuit of Excellence	High quality learning experience	Valuing People	Extending the boundaries of learning	Achievement	British Values (Democracy, The rule of law, Individual liberty, Mutual respect, Tolerance)
	Achievement	Service	Participation	Inclusive	Responsibility	Environment	
BRONZE	Receive an academic, sporting or cultural award from school.	Donate once per term to a food bank or local community project.	Attend an after-school club for six weeks either sporting, cultural and/or academic.	Actively participate in activities which explore and challenge bullying/racism/homophobic views and stereotypes.	Take a lead role in and be a significant part of a lesson's structure. This should be recorded by a member of staff.	Help with a recycling scheme in or out of school.	
	Represent the school/club in your community in a team or individual sport, cultural or academic competition.	Donate old school uniform/PE kit/books to school for the benefit of the school community.	Become a regular reader in class/tutor time or complete the Lexonics/Readathon reading programme.	Complete all checkpoints for a new language of your choice on the DuoLingo App/Website.	Be a recognised buddy for someone at school.	Actively participate in improving the school environment in a way which could be recorded and is substantial and sustained.	
	Receive regular and substantial praise in your books in a number of different subjects over a term.	Take part in a service activity outside school such as Scouts, Girl Guides, Air/Sea/Army Cadets for at least 6 sessions.	Participate in a school or outside school concert, show or sporting event.	Produce a project about a culture new to you or country that you have not lived in.	Make a positive contribution as a student receptionist and have a reference written up to make clear the positive contribution.	Help out at home with the gardening for at least 5 hours during a term.	
	Take part in a holiday/ weekend activity where your skill and/or knowledge has deepened in a particular subject.	Be a tour guide for parents or visitors to the school both during school times and/or after school events.	Attend an out of school club for a sustained period and no less than 6 weeks.	Visit a place of significant cultural difference within the UK.	**Become an ambassador within one of the designated whole-school roles**	Complete 5 litter picks during tutor time throughout the academic year.	

## ASPIRE Rewards and Recognition

Upon successful completion of Bronze, Silver or Gold, students receive a certificate and a pin-badge to wear on their blazer during termly celebration assemblies. Their name will be shown on TV screens across the College to share their success across the school community. We also provide rewards breakfasts and other incentives to recognise their effort and achievements.

## Uniform and Appearance Expectations

To maintain high standards of presentation, safety and consistency across the College, the following rules apply without exception. Parents/carers are expected to ensure that students arrive each day in full, correct uniform.

### Jewellery

The rules below are **non-negotiable** and will be enforced daily:

- **Bracelets** — **not permitted** under any circumstances.
- **Nose studs** — **not allowed**, including clear, plastic or “retainer” studs.
- **Upper-ear piercings** — **not permitted**. Students may wear **one pair of small studs in the lower earlobe only**.
- **Rings** — students may wear **one ring only**.
- **Jewellery in practical subjects** — **all (permitted) jewellery must be removed** for PE, DT and any other practical lesson. This includes studs, rings, watches and all accessories.

New piercings must be arranged **outside of term time**. “Healing periods” are **not** accepted as a reason for breaching uniform rules.

### Skirts

To maintain a professional and appropriate appearance:

- **Skirt length** — skirts **must be of an appropriate length**, sitting **no higher than just above the knee**.
- Skirts that are **rolled up, too short, tight-fitting**, or worn in a way that alters the intended length are **not acceptable**.
- Students arriving in skirts that do not meet the required length will be expected to **adjust them immediately** or will be issued with **alternative uniform** for the day.

This expectation is **strictly enforced** to ensure consistency and uphold the standards of the College.

### Footwear and Socks

To ensure consistency and uphold the professional appearance of our students:

- **White socks** — **not permitted**. Students must wear **plain black socks only**.
- **Trainers** — **not allowed** as school footwear. This includes all branded, sports-style or “trainer-style” shoes, regardless of colour.
- **School shoes** — students must wear **plain black, polishable school shoes** that meet uniform expectations.

Students arriving in incorrect footwear or socks will be required to change into school-issued items immediately.

### Enforcement

These expectations will be **rigorously and consistently enforced**. Students who arrive in school wearing prohibited items will be required to remove them immediately. If an item cannot be removed, the student will be placed in **supervised isolation** until the parent/carer can come onto site and resolve the issue.

### College Uniform

- Black blazer with embroidered Sir Harry Smith Community College badge (to be always worn).
- School tie (based on House colours).
- Black V-neck jumper optional for Autumn and Spring terms only (does not need the school logo on it – plain and no sports brands).
- White shirt or blouse.
- Plain black tailored trousers (loose fitting) or Plain black pleated skirt from our suppliers (**one inch above the knee**) or Plain black tailored shorts.

## Footwear

- Black, low-heeled footwear (i.e., less than 2" in height) - or plain black plimsolls.
- No sports or fashion logos or decoration should be visible on footwear.
- Open-toed shoes are not suitable, for health and safety reasons.
- Tights should be plain black, no patterns.

## Physical Education Uniform

Essential	Optional
Maroon polo shirt (with school badge)	Black ¾ zip sports top (with school badge)
Plain black shorts/skort	Plain black sports leggings/tracksuit trousers (if outside during winter)
Maroon, long sports socks	Football or rugby boots
Sports trainers	

## Where to Purchase

Branded college uniform is to be purchased from:

- Chroma Sports: [chromasport.co.uk/search/sir-harry](https://chromasport.co.uk/search/sir-harry)
- Total Clothing: <https://www.totalclothingshop.co.uk/shs>

Tailored trousers can be purchased from any retailer but must be in keeping with the Uniform policy.

## Uniform Support

If you require support with purchasing school uniform, please contact us ([office@sirharrysmith.com](mailto:office@sirharrysmith.com)), you may be eligible for funding to cover costs. May we also direct you to our second-hand uniform shop, available via the College reception, and Whittlesey Community Library, both venues have a free uniform donation service.

## Hair

Hairstyles and hair colours which stand out in an unacceptable way, and which may have a detrimental effect on the reputation of the College are not allowed.

## Make-up

Students may only wear a very small amount of **discreet** make-up and **clear nail varnish**. Nails must appear natural. Any student unsure about how much make-up counts as discreet should seek advice from their Head of House.

## Jewellery and Body Piercing

- 1 watch
- 1 pair of studs in the lower lobes, which must be removed for practical subjects.
- Hooped earrings, including sleepers, are not allowed to be worn.
- Body jewellery, including tongue, lip, eyebrow, belly button, etc. are not allowed to be worn.
- Facial piercings are not allowed to be worn, **this includes nose studs and/or retainers**.

## Equipment

To ensure students are fully prepared for learning, the following equipment is **mandatory**. Students **must** bring all required items to school **every single day**:

- Basic stationery — **at least two pens** (blue/black), pencils, ruler, rubber, pencil sharpener, protractor, compasses, scientific calculator and glue stick.
- Additional subject items — such as art sketch books and revision booklets, where required.
- School bag — students must have a **sturdy, practical bag** capable of carrying books, equipment and homework safely.

**All essential items can be purchased from Reception or via ParentPay.**

## Shape of the Day

- 08:00am – College opens
- 08:30am – Registration
- 09:00am – Period 1
- 10:00am – Period 2
- 11:00am – Break
- 11:20am – Period 3
- 12:20pm – Period 4
- 13:20pm – Lunch
- 2:00pm – Period 5
- 3:00pm – End of College day

## Admission Documentation

The below forms must be fully completed and returned by 5<sup>th</sup> June 2026.

- Admission Form (pink sheet) must be fully completed, including parents' names, addresses, contact number(s), email address and emergency contact information.
- Home School Agreement.
- Prescribed Medication Consent Form (green sheet) must be fully completed if your child receives any prescribed oral medication or prescribed inhalers, i.e. asthma, diabetes, epilepsy, allergies etc.

## Barnardo's Stepping into Secondary School

Barnardo's children's charity has produced a top tips guide for students and their parents/carers. The guide can be accessed at the following site:

<https://educators-barnardos.org.uk/uploads/transition-guide-stepping-into-secondary-school.pdf>

The guide contains a range of useful ideas and strategies to support with transition into secondary and to make you feel more confident and prepared for your new start.

## Warm Welcome

Welcome to Sir Harry Smith Community College. I hope that this information pack has been useful. We are very much looking forward to seeing you at the College on Tuesday 8th July.

May I finally take this opportunity to say that I wish you every success throughout your secondary education with us at Sir Harry Smith Community College.

If you have any questions, please do not hesitate to contact Mr Crane, Transition Lead, who will be happy to assist you further.

Best wishes,

Dawn White

Principal